



**RHODES AVENUE PRIMARY SCHOOL**

# Rhodes Avenue Primary School

Tuesday 21<sup>st</sup> June 2016

**Reception Information Evening for  
Parents**

# Information Evening Agenda

- Rhodes Avenue Primary School's aims statement
- Introductions – staff
- Early Years Foundation Stage Curriculum overview
- Settling in procedures

# **Aims statement**

Rhodes Avenue Primary School strives to provide the best in primary education. Working in partnership with the local community, the pupils, staff, parents, and governors continue to pursue excellence in all aspects of school life. Our aim is for all children to enjoy learning, and to achieve success in a healthy, happy and inclusive environment.

# The Reception Team



## Kingfisher class:

Teacher – Myrtle Caldeira

Nursery Nurse – Anna Milic

## Owl class:

Teacher – Sophia Papworth

Nursery Nurse – Margaret Stow

## Robin class:

Teacher – Laura Moore

Nursery Nurse – Donna Obertelli



Link Leader: Maria Panayiotou

Provision Leader: Sally Eustance

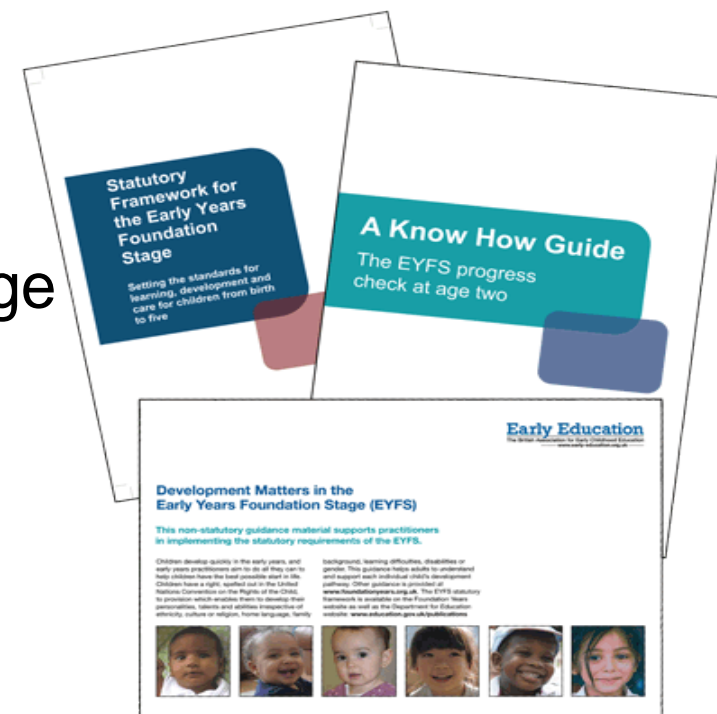
Play worker: Maria Ktorou

# What is the EYFS?

EYFS → Early Years Foundation Stage

0-5 years phase of education

Children learn through **play**



3 characteristics of effective teaching and learning:

**Playing + exploring** – investigate, experience things and have a go

**Active learning** – concentration, perseverance, enjoyment

**Creating + thinking critically** – to encourage use of their own ideas, develop their own ideas, make links between ideas + develop strategies for doing things

# EYFS Curriculum

## 3 prime areas of learning:

Personal, Social + Emotional Development

Communication + Language

Physical Development

## 4 specific areas of learning:

Mathematics

Literacy

Understanding the World

Expressive Arts + Design

# **Personal, Social + Emotional Development**

Making relationships

Self-confidence and awareness

Managing feelings and behaviour

# Physical Development

Moving and Handling

Health and self-care



# Communication + Language

Listening and Attention

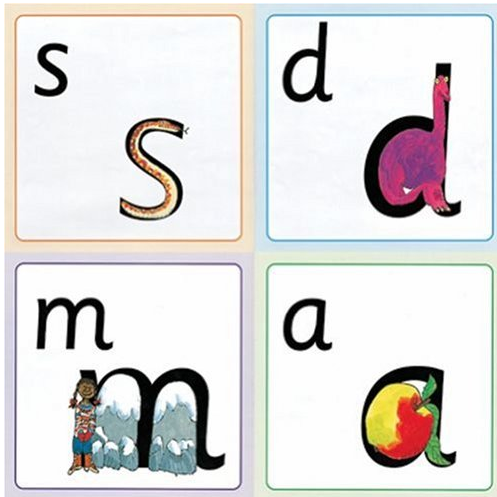
Understanding

Speaking

# Literacy

Reading

Writing



# Mathematics

Numbers → 1 - 20

Shape, space + measures

# Understanding of the World

People and Communities

World

Technology

# **Expressive Arts + Design**

Exploring media + materials

Being imaginative

# Key Person

A named member of staff with responsibilities for a small group of children who helps these children feel safe and cared for. A familiar figure who is accessible and available as a point of contact for parents and one who builds relationships with the child and parents/carers.

# What did you do at school?

lôôk@me



# Settling In Procedures

- 15 children in 2 groups
- Settling in period: 4 days part-time then full-time
- Settling in for parents
- Not set in stone – personalised
- Observations, baseline assessments, settling in takes time (unpredictable!)



# Which type of child will you have when settling in?

- Settles from day one, remains settled.
- A little unsettled to begin with, soon settles.
- Unsettled to begin with, takes time to settle but does so eventually.
- Very unsettled, with support settles over time.
- **ALL CHILDREN EVENTUALLY SETTLE!**
- Parents / carers need to be very calm.