



School Planning 2020-21 and Catch Up Premium

School Planning 2020-21

In order to support schools with school planning whilst we are in a world pandemic, the Education Endowment Foundation (EEF) has produced two help guidance documents:

The EEF guide to supporting school planning – A tiered approach to 2020-21

https://educationendowmentfoundation.org.uk/public/files/Publications/Covid-19_Resources/The_EEF_guide_to_supporting_school_planning_-_A_tiered_approach_to_2020-21.pdf

and

Covid-19 Support Guide for Schools

https://educationendowmentfoundation.org.uk/public/files/Publications/Covid-19_Resources/Covid-19_support_guide_for_schools.pdf

These documents suggest schools plan using a tiered approach with respect to school improvement and also with respect to planning how to support children to catch-up.

'Catch-Up' in this context refers to the children learning the main aspects of the curriculum they missed when they were in the first lockdown (March-August 2020.)

This, aforementioned, tiered approach describes 3 tiers and the areas of provision within the tiers which they suggest should be focused on in order to have the greatest impact this year.

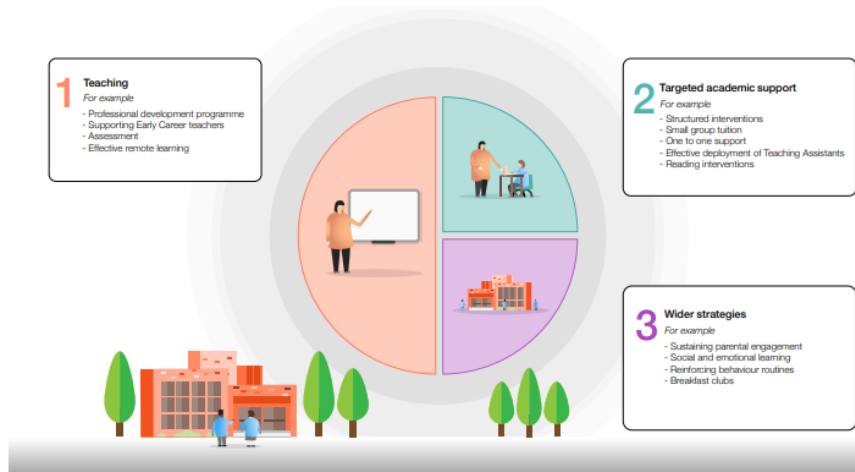
(The green text are the areas within the The EEF Guide to Supporting School planning and the red text are those areas detailed in the Covid-19 support guide for schools.)

Tier 1 – *Teaching (High-quality for all, effective diagnostic assessment, supporting remote learning and focussing on professional development.) Teaching and whole school strategies (Supporting great teaching, Pupil assessment and feedback and Transition support)*

Tier 2 – *Targeted academic support (high quality one to one and small group tuition, teaching assistants and targeted support, academic tutoring, planning for pupils with SEND.) Targeted approaches (One to one and small group tuition, Intervention programmes and extended school time)*

Tier 3 – *Wider strategies (supporting pupils' social, emotional and behavioural needs, planning carefully for adopting SEL (social and emotional learning) curriculum, supporting parents with pupils of different ages and successfully implementation in challenging times) Wider strategies (Supporting parent and carers, access to technology and summer support)*

It is suggested that a school's focus should also be split ½ on Tier 1 and a ¼ on Tier 2 and a ¼ on Tier 3, please see the diagram below:



Catch Up Premium

The Government has allocated funding to each school to support 'Catch-up'

<https://www.gov.uk/guidance/coronavirus-covid-19-catch-up-premium#use-of-funds>

This Dfe guidance states:

*Schools should use this funding for specific activities to support their pupils to **catch up** for lost teaching over the previous months, in line with the guidance on [curriculum expectations for the next academic year](#).*

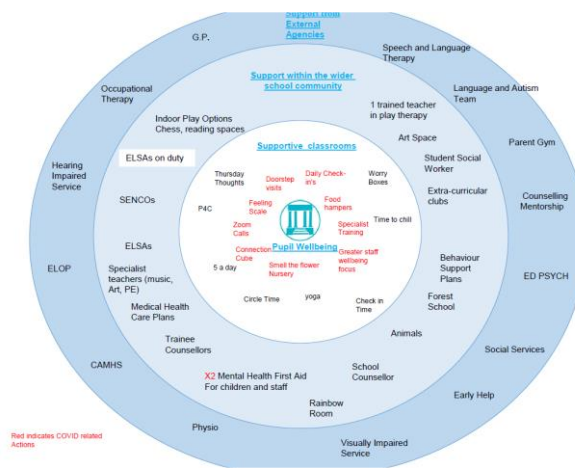
CATCH UP PREMIUM for Rhodes Avenue is:

Our school has been allocated a total of £50,320 for this academic year and this is financial split £29,355 paid within this financial year and £29,355 paid in the next financial year. It appears vulnerable tutoring funding is available through subsidised approved tutors. The school would pay 25% of the costs. Approved tutors would have to be used for individual FSM, SEND pupils. We are looking into this offer further.

The DFE guidance on the Catch-Up Premium references the two school planning documents so we as a school have decided to use the tiers to support our decision-making with respect to how we spend our Catch-Up Premium. The decisions are also guided by the school's vision and our determination to ensure all our children achieve and enjoy learning. Striving for excellence and supporting 'catch-up' in a happy, healthy and inclusive environment.

The steps taken so far:

- Nursery Nurses have been relocated into KS1 to support the transition from EYFS to KS1 and to support the delivery of the Year 1 and 2 curriculum.
- Specialist Teachers support Core Subjects in the morning in Years 2, 5, 6
- Additional teachers support the teaching of English or Maths in Years 2, 3, 4, 5, 6
- Following Pupil Progress Meetings (completed WB 5th October) – held earlier than normal on our SSE cycle - vulnerable pupils' identified for tutoring. We are now looking at the programme to see if this will work for the school.
- The children continue to be offered a broad and balanced curriculum – all foundation subjects are being taught – Specialist teachers work with one year group rather than across the school. Reception children continue to receive specialist Dance and French is being taught by Specialist Teachers across the school from Year 2.
- A Recovery Curriculum for Reading, Writing, Maths and Science has been developed
- A COVID layer has been added to the school's Wellbeing offer



The diagram on the following page details the additional provision we will be putting in place, which will be funded by our Catch-up Premium.

Allocation of CATCH UP PREMIUM @Rhodes Avenue Primary School to ensure ...pupils to **catch up** for lost teaching over the previous months, in line with the guidance on curriculum expectations for the next academic year.

